



Fall 2015
Newsletter #42

ASSOCIATION
OF OPTOMETRIC
CONTACT LENS
EDUCATORS

Southern College of Optometry (SCO) extended their southern hospitality to the attendees of the 2015 AOCLE Workshop. The workshop was held at the beautiful SCO campus and the legendary Peabody Hotel in Memphis, Tennessee from June 4-7, 2015.



In accordance with our previous AOCLE annual workshops, attendees engaged in top notch learning opportunities in contact lens management and education.

Schools with AOCLE representatives:



Next AOCLE Workshop:

*Northeastern State University
Oklahoma College of Optometry
Tahlequah, OK*

Arrivals: Thursday, June 9th, 2016

Departures: Sunday, June 12th, 2016

In this issue:

- 2015 Meeting Info (SCO), p. 1-3
- 2016 Meeting Info (NSUOCO), p. 3
- IACLE World Congress, p. 4
- School News, p. 6
- Industry Update, p. 7

The AOCLE meeting at Southern College of Optometry:

This year's workshop theme was "Challenges in Contact Lens Education." Through a variety of presentations, the attendees enjoyed interactive sessions which included innovative alternative teaching techniques. Team Based Learning and Distance Education were taught by Dr. John Mark Jackson and Dr. Daniel Taylor, respectively.

The attendees also had the opportunity to explore the development of effective test questions for enhanced learning. Dr. Cynthia J. Brame, known for her work in this area, gave insightful lectures on this topic.



Attendees participating in Team Based Learning



Cynthia J. Brame, Ph.D. addresses attendees

One highlight of the 2015 workshop were the multiple group rotations. In small groups, attendees toured the SCO clinic and the Tear Well Advanced Dry Eye Treatment Center under the guidance of Drs. Daniel Fuller, Whitney Hauser, and Mike Christensen. Educators were also able to put theory into practice by participating in the exercise "Writing Good Multiple Choice Questions" led by Dr. Cynthia J. Brame. Dr. John Mark Jackson led an interesting laboratory on slit-lamp photography using smartphones.

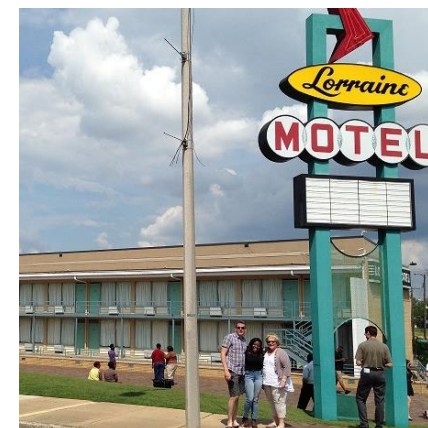


Dr. Daniel Fuller (SCO) showing attendees the SCO Advanced Procedures Surgical Theater



Dr. Whitney Hauser (SCO) speaks with attendees about SCO's Tear Well Advanced Dry Eye Treatment Center

In addition to the exemplary education, attendees were able to delight in leisure activities such as the National Civil Rights Museum, Sun Studios, Graceland, and a walking tour of Memphis.



Dr. McLeod (NECO), Dr. Mickles (NSUCO), Dr. Janoff (NSUCO), and Dr. Corzine (UCBSO) at the National Civil Rights Museum at the Lorraine Motel.



From left: Dr. Janoff (NSUCO), Dr. Chang (SCCO), Dr. Pack (NSUOCO), Dr. Edmondson (SCO), and Dr. Corzine (UCBSO) at Sun Studios.

The workshop closed with the annual AOCLE awards ceremony.

Dr. Heidi Wagner, currently of The Ohio State University College of Optometry, was recognized for her contributions to contact lens education and research with the Lester E. Janoff Cornea and Contact Lens Memorial Award. Having worked with Lester at NSUCO, she felt honored to receive this award named for her esteemed mentor and friend.



2016 AOCLE Mertz Travel Award Winners

The 2015 recipients of the George Mertz New Educator Travel Award were **Dr. Alex Nixon** of The Ohio State University College of Optometry and **Dr. Pam Satjawatcharaphong** of the University of California, Berkeley School of Optometry.

Thank you to Drs. Christina Newman, Dan Fuller, John Mark Jackson, Bill fine faculty at SCO for putting together an excellent workshop. We are looking forward to the 2016 AOCLE Workshop hosted by Northeastern State University Oklahoma College of Optometry in Tahlequah, OK.



From left, SCO Faculty - Drs. Newman, Fuller, and Edmondson

2016 AOCLE Workshop Preview: NSUOCO

The dates for the next AOCLE Workshop are June 9-12, 2016. The theme is still in the works and being finalized. You can expect a combination of lectures and workshops...and because it's Oklahoma, be ready for some laser education too (specifically SLT and YAG)! Corneal cross-linking education and viewing of new campus facilities also promise to be highlights.

Thank You to the Executive Committee and Sponsors for the 2015 AOCLE Workshop

A special thank you to the AOCLE executive committee for their generous service to this association. We would also like to thank our corporate sponsors for their continued support of this event. As always, we appreciate the informative presentations updating the educators on

the latest developments in contact lenses and related areas.



A photo of all the attendees at the 2015 AOCLE meeting at SCO.



A special thank you to our industry partners for their support of the 2016 AOCLE meeting!

Other News

3rd IACLE World Congress

Over one hundred contact lens educators and industry representatives gathered in the UK for the 3rd IACLE World Congress hosted by The University of Manchester in Manchester, England from May 24-28, 2015. The theme this year was "Shaping the Future of Contact Lens Education." Delegates gained hands-on experience with learning delivery systems, virtual reality technologies, and the use of iPads for classrooms and ePub development. IACLE members from around the world had the opportunity to take part in the event via a live online broadcast.

The International Association of Contact Lens Educators presented its first ever IACLE Award for Lifetime Achievement in Contact Lens Education. **Distinguished Professor Emeritus Dr. Desmond Fonn** received this honor for his contribution to global contact lens education. He was the founding member of IACLE and the association's vice president for 15 years. He also served as Editor in Chief of the first edition of the IACLE Contact Lens Course (ICLC) used by educators worldwide.



Dr. Desmond Fonn was honored with the IACLE Lifetime Achievement in Contact Lens Education Award at the 2016 meeting in Manchester, England.

"IACLE has been very dear to me," said Professor Fonn, acknowledging the contribution of the association's co-founders and the support of industry since its inception. "I've made incredible friends around the world who have spent thousands of hours working for IACLE. The result is that IACLE has been so instrumental in driving contact lens education."

Immediately following the IACLE World Congress, many delegates traveled to Liverpool for the British Contact Lens Association's Clinical Conference & Exhibition, held May 29-31, 2015. During an IACLE session there, Dr. Shehzad Naroo, current IACLE president, announced that a new edition of the ICLC

was in preparation.



Other IACLE 2016 Award Winners



AOCLE representatives at the IACLE World Congress: Renee Reeder, Gina Sorbara, Etty Bitton, Andrea Janoff, Sue Kovacich, Andrew McLeod, Judy Perrigin, Katie Clore, Jeff Walline, Sandra Fortenberry, Florencia Yeh, Lacey Haines, Beth Kinoshita, & Jan Jurkus.

Scleral Lens Society Travel Grant

The Scleral Lens Education Society is offering a \$500 travel grant to a 4th year student presenting a poster/paper at AAO or GSLS. Although the deadline has already passed for this year, we hope to

see this program continue in future years and await the name of this year's winner! Visit sclerallens.org for more information or contact Dr. Stephanie Woo at drwoo2020@gmail.com.

Gas Permeable Lens Institute

GPLI Receives Financial Commitment to Support Educational Programming

As the educational division of the CLMA, the GPLI has a 30-year history of providing practitioners with educational and practice-building tools and programs focused on custom lens prescribing. The GPLI is responsible for developing and maintaining an extensive library of specialty lens resources, including monthly online webinars, a comprehensive series of interactive fitting tools at www.gpli.info, frequent hands-on specialty contact lens fitting workshops and CE programs, and a bi-monthly newsletter, among other endeavors. These valuable resources help eye care practitioners deliver the personalized care required by patients with demanding refractive errors and specialized corneal concerns that are best served by custom contact lenses. Additionally, the GPLI's Cornea and Contact Lens Residents Program has impacted hundreds of young Optometrists with an annual weekend training session and ongoing mentoring from expert specialty lens fitters.

Because the raw material suppliers who belong to the CLMA return a small portion of their sales to fund the educational programs of the Gas Permeable Lens Institute (GPLI), the sudden departure of two companies threatened short-term program funding. However, thanks to the generosity and dedication of the active CLMA member laboratories and suppliers, the GPLI's educational programs are secure for 2016 and beyond.

"As the Executive Director of the GPLI, I am truly grateful for the overwhelming show of support by these industry partners," Dr. Ed Bennett noted. "As the definitive source of specialty lens education, our work is vital to GP and specialty soft lens fitters. Despite the recent and formidable challenges facing the specialty lens industry, the commitment to practitioner support shown by the CLMA membership is stronger than ever."

Academy Fellowship

We would like to take the time to congratulate this year's new AAO Fellows who are current AOCLE members, industry supporters, and former contact lens residents:

Adeline Bauer
Sara Berke-Silva
Cory Collier
Tom Duchardt
Tiffany Gates
John Gialousakis
Roya Habibi
Jamie Kuhn
Jill Leisner
Brooke Messer
Heidi Miller
Sharon Park
Elizabeth Peguese
Stephanie Ramdass
Brianna Ryff
Florescia Yeh

STAPLE

Ursula Lotzkat and Sue Connelly continue to work hard on the STAPLE program bringing contact lens educational workshops to each school and college at an average rate of one workshop per week!

Keep up with them at:
<http://www.stapleprogram.com/Home.html>

Campus News – Winter 2015

University of California – Berkeley School of Optometry:

The College of Optometrists (UK) has invited **Dean John Flanagan** to become a Life Fellow in recognition of outstanding contributions to the profession of optometry. Specifically, the award recognizes Flanagan's contribution to research in glaucoma and diabetic eye disease as well as the development of optometric education in the UK and Canada. The ceremony was held in early November in London.

University of Houston, College of Optometry:

Longtime College of Optometry faculty member and University of Houston administrator **Dr. Earl L. Smith III**, was selected for the prestigious National Optometry Hall of Fame at a ceremony and reception June 25 during the AOA Meeting. Dr. Smith received both his Doctor of Optometry and PhD from UH and joined the College of Optometry faculty in 1978.

During this year's 32nd Annual Cornea, Contact Lens & Contemporary Vision Care CE program, **Dr. Norman Leach** received the 2015 University of Houston College of Optometry Award for Distinguished Research on Cornea and Contact Lenses. This prestigious award is in recognition of his outstanding contributions over many years in the field of cornea and contact lenses.

Illinois College of Optometry:

Dr. Neil Hodur has officially retired from ICO. While he will remain in the Contact Lens clinic on a part-time basis, he will be sorely missed. Dr. Hodur was honored with the Joseph L. Henry Achievement Award at graduation and was chosen by the Class of 2015 to deliver the Commencement address. Dr. Hodur's first days of retirement were chronicled by the ICO Communications Department and the resulting photojournalism can be viewed at: <http://icomatters.ico.edu/neil-hodur/>

Dr. Jan Jurkus recently returned from teaching a week-long course on orthokeratology in China. She spoke to about 350 children and their parents about the benefits of ortho-k in myopia control.

Dr. Jennifer Harthan, Chief of the Cornea Center for Clinical Excellence at ICO, was named a Fellow of the Scleral Lens Education Society (FSLs).

Dr. Lindsay Sicks received the Dr. Rodger Kame Special Recognition Award from the Cornea and Contact Lens Section at the AOA meeting in June.

The Ohio State University College of Optometry:

Karla Zadnik, OD PhD published results in *JAMA* from the NEI-supported CLEERE (Collaborative Longitudinal Evaluation of Ethnicity and Refractive Error) study. Dr. Zadnik, a Glenn A. Fry Professor in Optometry and Physiological Optics, became The Ohio State University College of Optometry's first female dean in 2014.

The Ohio Affiliate of Prevent Blindness, the state's leading volunteer nonprofit public health organization dedicated to preventing blindness and preserving sight, elected Columbus resident **Dr.**

Dean VanNasdale, Assistant Professor of Optometry and Member of the Ohio Optometric Association, to the Board of Directors for a three year term at their Annual Meeting on May 18, 2015.

Investigators at OSU and UH were awarded grants from the NEI worth about \$7.5 million over five years. The study is called BLINK – Bifocal Lenses In Nearsighted Kids. The purpose of the investigation is to determine whether commercially available soft bifocal contact lenses slow myopia progression in children. Nearly 300 children between the ages of 7 and 11 will be enrolled and randomly assigned to wear spherical or multifocal (low or high add) lenses. The team includes AOCLE members **Dr. Jeff Walline** (Study Chair) and **Dr. David Berntsen** (Clinic Principal Investigator at UH).

Midwestern University Arizona College of Optometry:

Drs. Jamie Kuhn and Florencia Yeh were awarded Fellowship in the American Academy of Optometry at the New Orleans meeting in October.

University of Missouri-St Louis College of Optometry:

Dr. Ed Bennett received The Michael G. Harris Family Award for Excellence in Optometric Education at the AAO'15.

NOVA Southeastern University College of Optometry:

Dr. Chandra Mickles has joined the contact lens faculty at NSUCO, working in cornea and contact lens clinical, didactic and laboratory instruction. She continues to be involved in contact lens and myopia control related research.

Dr. Andrea Janoff had an Op Ed article featured in the Sun Sentinel of Broward County, Florida. The article is available at <http://www.sunsentinel.com/opinion/commentary/fl-viewpoint-contacts-20150320-story.html>

Pacific University College of Optometry:

Dr. Jenny Coyle completed her second term as ASCO president in June 2015.

State University of New York College of Optometry:

Drs. Sharon Park and John Gialousakis were awarded Fellowship in the American Academy of Optometry at the New Orleans meeting in October.

Industry News – Winter 2015

ABB Optical Group

ABB Optical Group and Paragon Vision Sciences have launched the companies' first University Education Challenge, a program designed to support the optometrists of tomorrow! The program and participant requirements were announced in June 2015 at the annual Association of Optometric Contact Lens Educators (AOCLE) conference.

Each participating school will select a team from its third-year class to create a 45-to-60-minute live, online presentation on any topic relating to contact lenses. The presentations, held from September through April, will be judged on overall webinar attendance and scores of a post-webinar survey that will be emailed to all optometrists and optometry students who viewed the presentation. The

winning school will receive a \$5000 unrestricted educational grant!

Akorn

TheraTears® products are a unique science-based therapy designed to be used to restore, cleanse and nourish your eyes. TheraTears® will enter its 20th year in 2016 with a complete brand renovation including packaging redesign.



Alcon Laboratories

In March of this year, Alcon released to the market a new, more consumer-friendly contact lens case with marked packages of CLEAR CARE® Solution. The new contact lens case is blue and white, with lens baskets differing in color to help consumers more easily differentiate between left and right lenses before and after cleaning. Lens baskets in the new case now have tabs to enable easier opening.

Alcon has also appointed Sergio Duplan as Region President, Alcon North America. He succeeds Robert Warner, who assumes a new Alcon executive committee role as Global Franchise Head, Alcon Vision Care.

In June, Alcon US launch of CLEAR CARE® PLUS Cleaning & Disinfecting Solution containing HydraGlyde® Moisture Matrix technology, for cleaning and disinfecting contact lenses. CLEAR CARE PLUS is preservative-free and the only hydrogen peroxide-based solution available in the United States with HydraGlyde Moisture Matrix technology. "CLEAR CARE PLUS combines deep cleaning and outstanding disinfection with the added benefit of Alcon's proprietary wetting technology that surrounds soft contact lenses with lasting moisture, complementing moisture from the wearer's own tears," said Carla Mack, OD, MBA, FAAO, Director of Professional and Clinical Support, for US Vision Care at Alcon.

Alcon, the global leader in eye care, traveled to world-renowned IMG Academy to evaluate the visual-motor skills of its athletes and bring them the latest innovations in vision care technology, including DAILIES TOTAL1® contact lenses. Alcon also invited professional football player Victor Cruz to participate in the eye evaluations and share his perspective on the importance

of vision with IMG Academy student-athletes and campers.

The Alcon Foundation partnered with the American Optometric Foundation (AOF) to co-host the *Cycle for Sight 20/20 Challenge* at AAO. The Alcon Foundation pledged a \$25,000 donation to the AOF, to be used to fund optometric education and research, when Academy attendees reached 2,020 minutes of cumulative stationary bicycle riding on the show floor. An additional donation of up to \$25,000 in matching funds was also pledged for any donations made directly by attendees to AOF during the 2015 Academy Meeting in New Orleans.

Alcon is proud to launch its 2015 Back-to-School Program, *Get an A+ in Eye Care*, with a free downloadable e-book, *Howard and the Amazing Eye Exam* co-authored by Dr. Catherine McDaniel. The e-book is available at www.THEeyeSOLUTION.com.

Art Optical

Art Optical heads into 2016 with a full line-up of new products and services for specialty lens fitters. New lens offerings include Ampleye, their 4-zone, fully vaulting 16.5mm scleral lens design, and Expert Progressive, a multifocal GP designed to perform like a progressive spectacle lens. In addition, key Art Optical signature lens designs, including

Ampleye, Expert Progressive, Thinsite, Achievement, and others, are now available in the Optimum family of GP materials. To accommodate practitioner requests for simplified return programs, Art Optical will introduce a Guaranteed Fit Warranty option that will allow unlimited exchanges when collaborating with Art Optical's expert consultation team and eliminate the hassle of returning refit lenses. And finally, the company website, www.artoptical.com will be re-launched in an all-new mobile-friendly format. Educators and students are encouraged to explore the extensive fitting tools and practice management resources aimed at improving specialty lens performance and increasing patient success. Art Optical values their partnership with AOCLE member schools and welcomes opportunities to partner in preparing the specialty lens professionals of the future!

Allergan

Allergan has announced its REFRESH AMERICA campaign to help our nation's best perform and alleviate their discomfort from dry eye. Every purchase of specially-marked packages in the REFRESH OPTIVE® product line between now and July 31, 2016 will lead to donations of REFRESH® eye drops to select first responder groups nationwide. Allergan guarantees a minimum product

donation with an approximate retail value of \$250,000, regardless of the number of eligible products sold during the campaign period.

"We are pleased that we can offer comfort to first responders working in smoky and dusty conditions with quality eye care products," said Brent Saunders, CEO, Allergan. "REFRESH® is the number one doctor recommended brand of artificial tears, and we hope this philanthropic program will provide much-needed relief to the men and women who keep us safe."

"There are an estimated 25 million Dry Eye sufferers in the United States.ⁱ More specifically, I see first responders in my practice who complain of eye dryness, burning and irritation brought on by environmental hazards like dust and smoke which are inherent to their work," said Marguerite McDonald, MD, FACS, board-certified ophthalmologist, Ophthalmic Consultants of Long Island. "I recommend REFRESH OPTIVE® Advanced products to my patients because they are clinically proven to lubricate for Dry Eye relief, hydrate the eye surface cells and help protect your natural tears from evaporating." Allergan's partnership with the U.S. First Responders Association will help designate where REFRESH® eye drop donations will do the most good for our nation's best. The website for the

program is at:
helpREFRESHAmerica.com.

AVT

Keith Parker President of AVT was awarded the CLMA 2015 Honorary Recognition Award for his services and contributions to the CLMA at the Awards Banquet on Saturday, October 31st. Mr. Parker was also re-elected to the CLMA board of Directors for 2015 and 2016. Ed Bennett, OD, MSEd, FAAO, FSLs, Executive Director of the GP Lens Institute presided over the banquet festivities.

"I am very honored to have received this award," said Parker, "I look forward to continuing to help develop and grow the custom lens business for many years to come."

Bausch + Lomb

Bausch + Lomb announced at a B+Lieve event in Boston that it will launch Bausch + Lomb ULTRA® contact lenses for Presbyopia with availability during the second quarter of 2016. The new multifocal lens was specifically designed to combine the company's innovative 3-Zone Progressive™ design, found in Biotrue® ONEday for Presbyopia daily disposable contact lenses, with the

excellent end-of-day comfort of Bausch + Lomb ULTRA® contact lenses with MoistureSeal® technology.

The company also recently entered into a definitive agreement to acquire Doctor's Allergy Formula, LLC, which will be integrated under the company's pharmaceuticals division. The FDA-approved in-office Doctor's Allergy Formula test enables eye care practitioners to objectively diagnose and identify the root cause of patient's ocular allergies. The three-minute ocular allergy diagnostic test utilizes a panel of 60 allergens that are specific to each region of the country and provides results within 15 minutes.

On the Professional Affairs side, the company has appointed Dr. Brian Rosenblatt, OD as director, Professional Strategy. Dr. Rosenblatt will join Dr. Jill Saxon and Todd Love, directors of Professional Strategy, in coordinating the company's Eye Care Professional (ECP) outreach efforts across Vision Care. This addition to the Professional Strategy team will help strengthen Vision Care's focus and support of the optometry community through a wide range of initiatives designed to support ECPs and students across the nation.

B+L also held an Educator's meeting prior to the AAO Meeting in New Orleans

in October which was well received by those in attendance.

Blanchard Contact Lenses

www.blanchardlab.com

800-367-4009

Ledonna Buckner, FCLSA, NCLEM

ledonnabuckner@cox.net

Lee Buffalo, NCLEC

leebuffalo@aol.com

Richard Dorer, NCLE

richard.dorer@gmail.com

In addition to producing high quality, innovative and simple to fit scleral lens designs, Blanchard and their team of highly skilled consultants continue to focus on partnering with educators to elevate their success by providing them with training in design, application and fitting of scleral lenses through their educational division: Blanchard University. To date, Blanchard has certified over 1,700 scleral lens providers in North America, Norway, Sweden, Finland, Denmark, and Mexico. Since 2014, Blanchard has offered all AOCLE members and residents, all-expense paid support to attend Beyond the Limbus scleral lens workshops throughout North America. Many educators have attended and all are welcome. Contact Blanchard for a 2016 workshop date near you.

Blanchard continues to see excellent growth with its msd™ Select line of mini scleral lenses, as well as with their latest scleral lens offering – the [OneFit™](#) Platform. Both msd Select and OneFit embrace Blanchard's proven minimalist concept of scleral lens design. msd™ Select remains an ideal choice for the highly compromised, highly irregular, medically indicated cornea. OneFit lenses, with a standard diameter of just 14.9mm, offer the crisp clear acuity of a GP lens, with the hydrating comfort of a soft lens. These innovative lenses are now being fitted for more day-to-day cosmetic applications including presbyopia, GP intolerant astigmats suffering with marginal dry eye complications, form fruste keratoconus, moderate corneal irregularities, post-refractive surgical presbyopes, and sports active youth and adults.

Connect with Blanchard today to discover what their leading scleral lens designs and educational offerings can do for the future success of you and your students!

CooperVision

Cooper Vision is proud to introduce the MyDay® Daily Disposable contact lens! MyDay® is the world's first daily disposable contact lens featuring Smart Silicone™ chemistry. Smart Silicone™ is

the revolutionary hydrophilic long-chain molecule at the heart of MyDay's sophisticated chemistry. Efficient silicone channels within the contact lens structure allow excellent oxygen transmissibility with minimal silicone content. This uniquely low hydrophobic silicone content means water can be integrated into the chain structure making the lens genuinely wettable from within, without coatings or surface treatments.

As a result, MyDay® lenses eliminate the trade-offs that often compromise other silicone hydrogel daily disposables, delivering everything from long-lasting comfort, to healthy breathability, to effortless ease of handling, in a way that no other silicone hydrogel daily disposable does. The lens was first fit at the MyDay® Experience in the CooperVision booth at Optometry's Meeting in Seattle. There were many comments of how comfortable the lens was immediately after application.

The MyDay® Daily Disposable lens will be included in the Student Complimentary Lens Program and CooperVision's Adopt a Patient® program effective immediately. Lenses for those patients do have to be ordered through Robin Leccese (rlleccese@coopervision.com) to insure that the lenses are delivered complimentary. Please feel free to share

your experiences after you've had the opportunity to try the lens.

Diagnostic fitting sets have been shipped to all of the schools. Please let Rose Britton know if you have not received your set, or if you have satellite clinics that would require a fitting set.

Johnson & Johnson Vision Care

Give your patients the contact lens that provides performance throughout their demanding day. New ACUVUE OASYS® Brand Contact Lenses 1-Day with HydraLuxe™ Technology has a tear-infused design with an enhanced network of tear-like molecules that integrates with your patients' own tear film each day to help reduce symptoms of tired eyes and dryness.

The lens is available in powers:
-0.50D to -6.00D (0.25D steps)
-6.50D to -12.00D (0.50D steps)
+0.5D to +6.00D (0.25D steps)
+6.50 D to +8.00D (0.50D steps)
with two base curve options (8.5 and 9.0) and a 14.3mm overall diameter.



Chandra Mickles (NSUCO) and Julie DeKinder (UMSL) met former NFL player Tiki Barber at the Acuvue Oasys 1-Day Launch/Speaker's Training this fall.

SpecialEyes

The newest introduction from SpecialEyes is the [SpecialEyes Multifocal Contact Lens Simulator](#) - a proprietary software program that simulates the potential visual performance of the SpecialEyes 54 Multifocal custom contact lens. Pupil size matters and plays a critical role in multifocal contact lens fittings. By incorporating pupil size and other key parameters, the simulator will optimize the multifocal optics, distributing them in accordance to each patient's individual pupil size. Therefore, the simulator will serve as an invaluable tool for designing and prescribing [SpecialEyes custom multifocal and toric multifocal contact lenses](#) - offering your patients unparalleled visual acuity and comfort.

SpecialEyes still uses their sagittal height based Arc Length Fitting Calculator when ordering custom soft toric and spherical lenses. You provide the Ks, Rx and HVID and the algorithm provides the optimal BC, OAD and lens power for your patient.

Unlimited exchanges within 90 days and no need to return lenses add up to the best custom soft lens fitting you can provide. Visit specialeyesqc.com to learn more.

SynergEyes

ULTRAHEALTH^{FC}

The UltraHealth FC (Flat Curve) was launched earlier this year. The lens is designed for post-refractive surgery patients, mid-peripheral ectasias, and other corneal irregularities. There are many resources online, including fitting guides and training videos on <http://synergeyes.com/>.

The new lens design is designed to give your post-refractive patients and patients with oblate corneal surfaces great vision and comfort with all the advantages of high Dk materials. SynergEyes has recently provided every school with the new UltraHealth FC diagnostic fitting set. Dr. Peg Achenbach provided information and training to each school

and/or their representative at AOCLE on the use of the new UltraHealth FC.

Please contact SynergEyes or Dr. Peg Achenbach: pachenbach@synergeyes.com for more information.

Valley Contax

Valley Contax is headed for another exciting year in 2016!

Valley is committed to the constant evolution of custom contact lenses and to providing support to each and every school to make that happen. In 2016, Valley will continue to offer complimentary student lenses, hands-on workshops, and the "Extern 5-Pak" program (in conjunction with the American Optometric Student Association). The "Extern 5-Pak" is a travel kit of 5 Valley Custom Stable Elite lenses offered for students on rotation to encourage scleral lens fitting. For students who are unable to participate in the program during their rotations, the fitting kit is available as a graduation gift. The program has been incredibly well received by the students and AOSA.

Valley Contax has also successfully put in place our regional education consultants. These young practitioners are ready to support your students, residents and other educational efforts every step of the way.

Introducing, our regional educators:

US Northeast: Dr. James Deom:
dr.deom@gmail.com

US Southeast: Dr. Cory Collier:
drcmcollier@gmail.com

US Great Lakes: Dr. Josh Lotoczky:
JoshLotoczky@ferris.edu

US Southwest: Dr. Brianna Ryff:
briannahydziez@gmail.com

Southern California: Dr. Heidi Miller:
heidimillerod@gmail.com

US Northwest: Dr. Roya Habibi:
rnhabibi@gmail.com

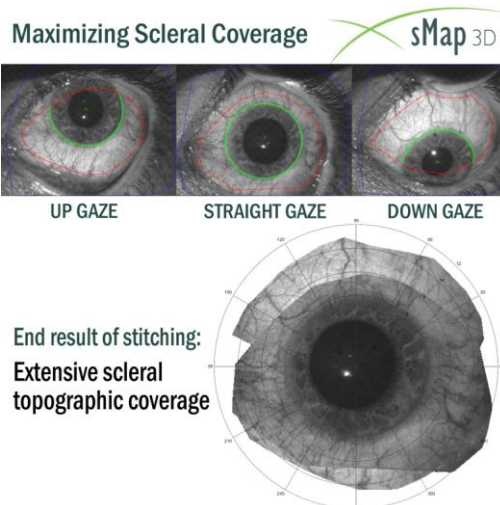
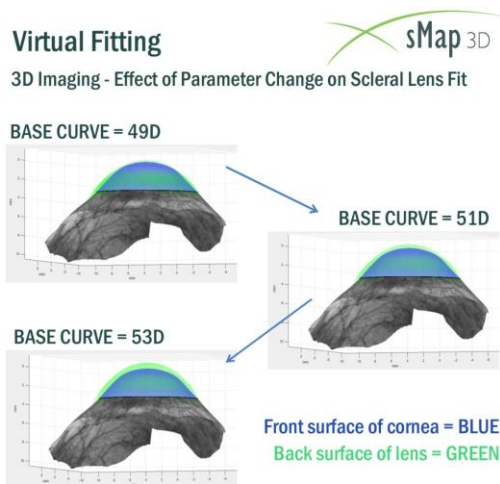
Please feel free to share their contact information internally and contact them with any education requests or support needs.

Valley Contax is also full speed into our launch of the greatest multifocal that we have ever designed. This multifocal is currently in its clinical trial phase, and early results show that the CSE Near 2.0

has the potential to change the lives of patients who have struggled with previous multifocal options. We are excited to officially launch this lens at GSLS 2016!

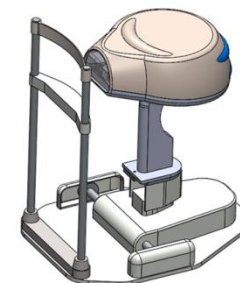
Visionary Optics

Visionary Optics introduced the highly anticipated corneal-scleral topography system, the sMap3D, at the American Academy of Optometry meeting. Visionary Optics is the exclusive US distributor of this technology. The sMap3D is a fluorescence-based structured light topographer with more than 22mm range and 360° Scleral Coverage that will revolutionize scleral lens fitting. It offers integrated software for fitting and customizing Europa Scleral lenses with an Unbeatable Price. Utilizing 3D stitching, it combines multiple gaze directions into a complete model of the ocular surface minimizing interference from the eyelids. A variety of visualization tools help you predict lens fit and customize lens parameters for each individual case. Simulated fluorescein patterns help you compare sMap3D measurements to slit lamp observations. The sMap3D allows you to measure, customize, analyze and order scleral lenses all in one simple platform to eliminate the guesswork and save valuable chair time.



Visionary Optics enhanced warranty and exchange policy was created to alleviate any concerns about using scleral lenses on irregular cornea patients. Unlimited exchanges within 90 days. If only a parameter adjustment is needed, the

original lens does not need to be physically returned.



AACLE
AACLE Executive Board

Chair: Judy Perrigin, OD
University of Houston
jperrigin@central.uh.edu

Vice Chair: Sue Kovacich, OD
Indiana University
skovach@indiana.edu

Immediate Past Chair: Bruce Morgan, OD
Ferris State University
Michigan College of Optometry
morganb@ferris.edu

Secretary: Katie Clore, OD
University of Alabama at Birmingham
kclore@uab.edu

Treasurer: Neil Pence, OD
Indiana University
pence@indiana.edu

Communications:

*Andrea M. Janoff, OD
NOVA Southeastern University
janoffa@nova.edu*

*Lindsay A. Sicks, OD
Illinois College of Optometry
lsicks@ico.edu*

*Chandra Mickles, OD, MS
Nova Southeastern University
cmickles@nova.edu*