

ASSOCIATION
OF OPTOMETRIC
CONTACT LENS
EDUCATORS

August 2005
Newsletter #23

Newsletter Highlights

AOCLE Officers

2005 Workshop Summary

2006 Workshop Preview

*Global Orthokeratology
Symposium Review*

Want to be a FIACLE?

GPLI Article Incentive Plan

Campus News

Industry News

Useful Websites

AOCLE Directory

New AOCLE Treasurer Elected

John Corzine (Berkeley) was elected as the new treasurer for the AOCLE on June 4, 2005.

MCO Workshop focuses on interactive technologies!

MCO was this year's host of the AOCLE Workshop. Topics included Computerized Performance System (CPS), Web CT and Telemedicine, and Entry Level Skills.

Past-Chair Honored

Neil Pence (Indiana) was honored for his service as Chair of the AOCLE from 2002-2004.

Preview of Montreal

The 2006 Workshop will be hosted by the École d'optométrie, Université de Montréal in Montreal, Quebec, Canada between June 1-4, 2006. See some preview on the separate .pdf file attachment.

Achieving FIACLE Status

Passing the IACLE Accreditation Examination is only one of the initial criteria to become a FIACLE. There are two levels of FIACLE status.

GPLI Article Incentive Plan

This is a great CL Educator Opportunity!! Read more to find out how you can receive assistance in publishing an article.

AOCLE Officers

At the AOCLE Business Meeting on June 4, 2005, John Corzine (Berkeley) was elected as Treasurer of the organization. New officers will be elected at the 2006 AOCLE Workshop in Montreal. The current officers are:



Chair: Jenny Smythe, OD, MS
Pacific University
College of Optometry
Tel (503) 352-2770
Fax (503) 352-2929
smythej@pacific.edu

Vice-Chair: Ron Watanabe, OD
New England College of Optometry
New England Eye Institute (NEEI)
Tel (617) 236-6249
Fax (617) 369-5056
watanabe@ne-optometry.edu



Secretary: Etty Bitton, OD, MSc
École d'Optométrie
Université de Montréal
Tel (514) 343-7302
Fax (514) 343-2382
etty.bitton@umontreal.ca

Treasurer: John Corzine, OD
University of California, Berkeley
School of Optometry
Tel (510) 643-2793
Fax (510) 643-5109
jcorzine@spectacle.berkeley



Communications Committee:

Co-Editor: Bill Edmondson, MAT, OD
Northeastern State University
College of Optometry
Tel (918) 456-5511 x4015
Fax (918) 458-2104
edmondsw@nsuok.edu



Co-Editor: Latricia Pack, O.D.
Northeastern State University
College of Optometry
Tel (918) 456-5511 x4044
Fax (918) 458-2104
packl@nsuok.edu

Circulation Coordinator: Sri Thota, OD
University of Houston
College of Optometry
Tel (713) 743-1951
Fax (713) 743-2053
sthota@optometry.uh.edu



2005 AOCLE Workshop Summary

The 2005 AOCLE Workshop was hosted by Michigan College of Optometry June 2-5, 2005. The workshop theme was: "Lifelong Learning through Interactive Technologies".



It was a wonderful time of the year to visit Michigan College of Optometry and the beautiful state of Michigan. We worked on interactive teaching / learning techniques, distance learning technology, and had the opportunity to "network" with fellow contact lens educators and contact lens industry representatives. A special thanks to, Bruce Morgan, Mark Swan, Michelle Aldrich, and all the other Michigan faculty and administrators like Nancy Peterson-Klein, Renee Mita, John Pole, and all the rest for planning and presenting the 2005 AOCLE Workshop. It is obvious you all have a great working relationship.



We also want to thank our corporate sponsors for their generous support for the 2005 AOCLE Workshop. If you haven't had a chance, take a few moments to review the materials and share them with your colleagues at your home institutions. The following is a list of all of our corporate sponsors and their websites.

Alcon

Chuck Marshall, Shawn O'Neil

<http://www.alconlabs.com/>

AMO

Dave Hansen

<http://www.amo-inc.com/site/>

Blanchard

Richard Dorer

<http://www.ferris.edu/mco/aocle/Presentations/Corporate%20Sponsors/Blanchard.htm>



Bausch & Lomb

Stephan Byrnes, Fred Edmunds

<http://www.bausch.com/>

CIBA Vision

Suzanne Nylander

<http://www.cibavision.com/>

CooperVision

Jeff McClean, Sharon Teague

http://www.coopervision.com/us/patient_home.asp

Menicon/Lens Dynamics

Ray McWherter

<http://www.menicon.com/>

Paragon Vision

Kenneth Kopp

<http://www.paragonvision.com/>



Vistakon

Christina Schnider

<http://www.jnjvision.com/>

X-Cel Contacts

Kenneth Buck, Linda Glover

<http://www.walman.com/Divisions/xcel.html> &
<http://www.visionlens.com/>

Mark & Bruce made sure we had a USB pen device that contained both the sponsor information and the presentations. Let Mark or Bruce know if you are having trouble with yours.

Classroom Performance System

Bruce Morgan & Marty Abrahamson gave an interactive session on the Classroom Performance System (CPS). MCO funded their grant application for this system which consists of a computer, a video projector, wireless student devices and a connecting network. This system combines technology with questioning techniques to promote a high level of active learning in the classroom.

With this system, students each have their own interactive, hand-held, answer pad and everyone can participate when a question is put before the group. Although student privacy is maintained, the professor can make a more reliable evaluation of whether to spend more time on a concept or to move ahead. The students get immediate feedback on their level of understanding. Quizzes can also be presented with this method. This technology helps shift the learning environment from a passive, teacher-centered one toward an interactive one where students are more engaged and, therefore, learn more. The CPS system also accommodates a wider variety of student learning styles and makes the learning of more involved subjects with a scientific basis more positive for students.

The emphasis is that the learning is a very active, participatory process for students. Professors use questions to stimulate thought and make learning more active in their classrooms. Asking students questions enhances their critical thinking and enables educators to evaluate the effectiveness of their course presentations. The complete presentation is available at

<http://www.ferris.edu/mco/aocle/Presentations/Lectures/CPS.htm>.

Web CT and Telemedicine

Terry Doyle (doylet@ferris.edu) started us out with a provocative discussion of learning itself. His presentation, “[Promoting Deep Learning in College Students -> Moving Students Beyond Grades](#)”, really caused some discussion the next day. The premise was almost no learning happens during a lecture; instead, students are only introduced to the material in the lecture and “learning” happens during subsequent study, repetition, and application.

On the other hand, Randy Vance & Nancy Peterson-Klein (Clinical Decisions in the Information Age) addressed a very concrete issue : how can clinical teaching & learning occur with students spread over the landscape and even over the world on Externships ? At the same time, how can you help these student clinicians working for the first time without other students around, feel they are still part of their home institution?

Using WebCT, MCO students are divided into groups with a resident and a faculty member. Each student must post a referenced Case Report during their Externship. Other students in the group are expected to post comments and the Resident, and occasionally the Faculty member, add comments & summarize the main points. Web-based learning has become increasingly obvious as the way practitioners will stay abreast of new information as well as the way we will take most CE courses.

Campus Tour/Entry Level Skills

All workshop participants were given a tour of the beautiful MCO campus. Following the tour, Harue Marsden led a discussion of Entry Level

Contact Lens Skills that participants started at the 2004 AOCLE Workshop.



AOCLE Business Meeting

There were 7 new attendees at the meeting. The first-timer AOCLE Representatives were Julie DeKinder (UMSL), Carrie Gautreau (UAB), and Caroline Besley (UAB).



The George Mertz Travel Award Recipients were Earlena McKee (NSUCO) and Jean-Sebastien Dufour (Montreal), pictured above. IACLE Representatives were Javier Gonzalez Perez (Spain) and Jan Willem Borst (Netherlands).

Jenny Smythe (Pacific), chair of the AOCLE, presented Neil Pence (Indiana) with a plaque acknowledging his dedication and service as Chair of the AOCLE from June 2002-2004.



The folks at MCO are leaving the 2005 AOCLE meeting website site <http://www.ferris.edu/mco/aocle/> active for awhile and they will use it to post information that might be useful following the workshop.

**Michigan College of Optometry
1310 Cramer Circle
Big Rapids, MI 49307**

Bruce Morgan
morganb@ferris.edu
ofc (231) 591-2180

Michelle Aldrich
aldrichm@ferris.edu
ofc (231) 591-3700
fax (231) 591-2394

Mark Swan
mswan@ferris.edu
ofc (231) 591-2184
cell (616) 540-3940



2006 AOCLE Workshop Preview

The 2006 Workshop will be hosted by the École d'optométrie, Université de Montréal in Montreal, Quebec, Canada between June 1-4, 2006. Plans are well underway and the hotel has been booked at Marriott Springhill in Old Montreal. A small presentation to the attendees of the MCO Workshop was given along with a quick survey to assess the pulse of the group for next year's meeting. These results will be tabulated and reported back to the planning committee as well as the AOCLE board. Those that were not present at the business meeting in Michigan can view the presentation on the AOCLE website at www.AOCLE.org to get a taste of next year's meeting. It is also included as a separate .pdf file attachment. Mark your agenda for June 1-4, 2006!

2005 GOS Review

Another fantastic Global Orthokeratology Symposium (GOS) was held in early July 2005 in Chicago, with almost 500 attendees and exhibitors from 29 different countries. This meeting crackled with energy reminiscent of the cutting edge National Research Symposiums

(NRS) of the past. Throughout the 3 1/2 day program, 39 speakers presented a wide-variety of lectures and free papers focusing on all aspects of Orthokeratology including eye-opening research reports on myopia and myopia control. Longitudinal studies using axial length, vitreous chamber depth, and retinal focus strongly suggest overnight corneal reshaping may be the best answer to myopia control. This symposium offered doctors 25 hours of continuing education in addition to 30 scientific posters on special projects and studies in the corneal reshaping field.

Previously held in Canada, this meeting met for the first time in the United States. Organizers Craig Norman, Ed Bennett, and Joe Barr out did themselves in the planning and execution of this 'must attend' meeting. While there were numerous outstanding lecturers & research reports, it is clear that familiar AOCLE folks Pat Caroline and Eef van der Worp played a significant role in the education of both the basic and advanced programs.

During the meeting attending AOCLE members met with the CLMA board and GPLI folks. Ed Bennett, O.D. previewed and outlined an outstanding addition to the GPLI website: an on-line GP book/manual including video clips & graphics that can be readily utilized in contact Lens education. Not only will it serve as a background assignment, but can be used in the distant learning situations we discussed at Michigan College of Optometry. It can also be called up quickly on computers located in the clinic to serve as teaching points to clinicians while the patient is in the clinic.

The Contact Lens Manufacturers Association (CLMA) and 32 other companies & associations were represented in the Exhibit Hall including Bausch & Lomb, Paragon Vision Sciences;

Contex, Inc.; Euclid Systems, Inc.; Menicon Co., LTD, and Vipok, Inc.

Want to be a FIACLE?

If you are one of the 75 members who passed the accreditation exam in October 2004, you are encouraged to consider applying to become a Fellow of IACLE (FIACLE).

Passing the IACLE Accreditation Examination is only one of the initial criteria to become a FIACLE. Please refer to the FIACLE web page for a detailed listing of specific criteria at www.iacle.org/education_page/programs/fellows_of_iacle.asp.

There are two levels of FIACLE status. Level 1 is for those members who are new to FIACLE status. You must be an IACLE member for a minimum of one year and have achieved a passing score on the Accreditation Exam. You can apply to become a Level 1 FIACLE upon receiving your test results.

After two years, you will be asked to renew your FIACLE status and proceed to a Level 2 status. Level 2 FIACLE status requires that you submit proof of being active in promoting contact lenses and contact lens education by delivering continuing education lectures, publishing articles, doing community service work and a number of other options.

You may go to www.iacle.org/pdf/FIACLE/FIALCE_Q&A_2004.pdf for a quick summary of frequently asked questions and answers on becoming a Fellow of IACLE.

GPLI Article Incentive Plan (AIP)

The Contact Lens Manufacturers Association's educational division, the GP Lens Institute (GPLI), has an ongoing Article Incentive Plan (AIP) that is available for optometry students, practitioners and researchers. Since 2001, I have had the opportunity to work with Dr. Ed Bennett and an average of 30 contact lens professionals/article authors a year as the AIP coordinator. On July 27th I had the opportunity to share a shuttle ride with Dr. Bill Edmondson on the way to the Global Orthokeratology Symposium in Chicago. We thought it would be a great opportunity to share this information with you.

There is no need to be hesitant about writing an article. Think about GP topics for articles like those you discuss everyday with students or that see in the CL Clinic. With the AIP program, you will have the AIP coordinator's 38-year journalism background & degree and 21-years as an O.D. to help you work your topic and place it with one of the many editors I work with.

There are two grant categories – practice management (\$500.00) and clinical (\$250.00). Some of the current topics include: common GP contact lens fits with new materials, care solutions, new designs, bifocal GP's for presbyopes and conventional to ortho-k fits for pediatric patients. Unusual/specialty GP fits, beyond an easy 2.0D myope or only -0.75 D WTR cylinder include keratoconus, post refractive surgery complications, toric and bitoric designs as well as GP's as medical devices, as well as ortho-k (corneal reshaping).

I encourage you to call me in Washington, DC at (202) 244-1324 or 244-3760 from 7 a.m. until 9:30 p.m. daily (Eastern Time) with your ideas and writing style level to make the idea publishable! I have been writing about contact

lenses since 1981 and did so during the years as a contact lens referral-only practitioner in downtown Washington, D.C. Do this for yourself as well as colleagues. Looking forward to hearing from you!

Barbara Anan Kogan, O.D.
AIP Coordinator of the GPLI

Campus News

SCO

Bart Campbell was promoted from Associate Professor to Professor.

Houston

Sri Thota, a 2004 AOCLE Workshop Mertz Travel Recipient, started a prosthetic course at the University of Houston after experiencing what SCCO was doing with prosthetics during the Workshop.

UAB

Dr. Ami Abel left teaching at the University of Alabama to work in a private practice in Birmingham, Alabama.

UMSL

Vinita Henry was promoted from Associate Professor to Professor. She also recently received the Chancellor's Award for Excellence for the university.

Ed Bennett was awarded the Lifetime Achievement Award for the CLCS of the AOA.

Julie DeKinder was hired as a Clinical Assistant Professor upon completing her Residency in Cornea and Contact Lenses at UMSL.

Other

Dr. Wanda Lam, a 2004 AOCLE Workshop Mertz Travel Recipient, is teaching in New Zealand. She says her interest in teaching was sparked by attending the AOCLE Workshop at SCCO.

Industry News

Bausch & Lomb

Bausch & Lomb now has a free, online resource designed to further streamline the already simplified process of fitting astigmatic patients with SofLens 66 Toric contact lenses. The speed and accuracy with which the online toric calculator delivers results are designed to improve office efficiency and reduce chair time for astigmatic patients. www.bausch.com

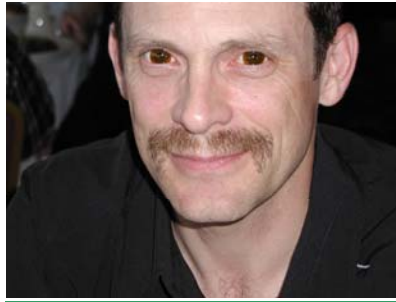
CooperVision

CooperVision is sponsoring a Contact Lens Educator Summit for members of the AOCLE invited as representatives of their educational institution. The meeting will be held in Washington D.C. on October 6-9, 2005.

VisionWeb

Dr. Stan Yamane was recently appointed Vice President of Professional Relations at VisionWeb. In his new role, Stan will manage VisionWeb's relationships with industry organizations, professional associations, and schools and colleges of optometry. Through speaking engagements, events, and writings, he will encourage industry participants to embrace technologies that improve efficiencies and help drive the industry forward.

Headquartered in Austin, TX, VisionWeb, LP is the online service to help eyecare providers simplify and streamline their practices. Stan will be based out of Jacksonville, Florida.



The directory is included as a separate .pdf file attachment to allow you to easily save it as a ready reference on your computer.

The AOCLE Communications Committee
Dr. Sri Thota, Circulation Coordinator
Dr. Latricia Pack, Co-Editor
Dr. William Edmondson, Co-Editor



Useful Websites

Please e-mail Latricia Pack, packl@nsuok.edu, with any website appropriate for this list.

www eyedock.com

This site has a comprehensive, searchable, contact lens and ocular medication database. You will also find contact lens calculators at this site.



www neuroeye.com

Once on the home page, click on Neuro-Ophthalmology to find some helpful schematics of visual pathway lesions and pupil pathway.

[AOCLE Directory](#)